



A TREKKING COMPANY

TANZANIAN SAFARIS

ARUSHA NATIONAL PARK

LAKE MANYARA NATIONAL PARK

NGORONGORO CRATER CONSERVATION AREA

SERENGETI NATIONAL PARK

TARANGIRE NATIONAL PARK

WELCOME



A safari in Tanzania is more magical than you can imagine. From watching a lioness teaching her cubs to hunt to a leopard feasting on an impala in the treetops, you've probably dreamt of Africa's wildlife for years. We've planned our safaris to accommodate these dreams. We get you up close to the most elusive of Tanzania's animals—but the animals are just the beginning. You can Tailor your safari to include all the experiences you're chasing after: from authentic cultural interactions to unforgettable tented camps where wildlife roam freely.

**“ IF I HAVE EVER SEEN MAGIC,
IT HAS BEEN IN AFRICA.”**

— John Hemingway

On our safaris, you have the opportunity to visit the Serengeti and its expansive plains, the Ngorongoro Crater—the largest unflooded, unbroken caldera in the world, drive among the thousands of animals on the the Great Migration, experience firsthand the Maasai culture, and marvel at the towering Mount Kilimanjaro.

A trip to Africa is not complete without visiting Tanzania's world-famous safari parks. Get up close and personal with some of the world's most fascinating creatures. You'll enjoy lunch next to a watering hole with lurking hippos, perhaps spot the legendary tree-climbing lion, and watch as massive tusked elephants amble about the Serengeti on a once-in-a-lifetime safari.

We recommend scheduling at least a few days after your climb so you can relax and recover in our air-conditioned safari vehicles. Our safari vehicles have pop-up tops so you can stand and take unobstructed photos of the wildlife.

The safaris we offer have the traditional tented camp accommodations. We chose the best locations—closest to the parks—to allow maximum viewing time. The Parks are open from sunrise to sunset. The animals are most active in the morning so an early start is key.

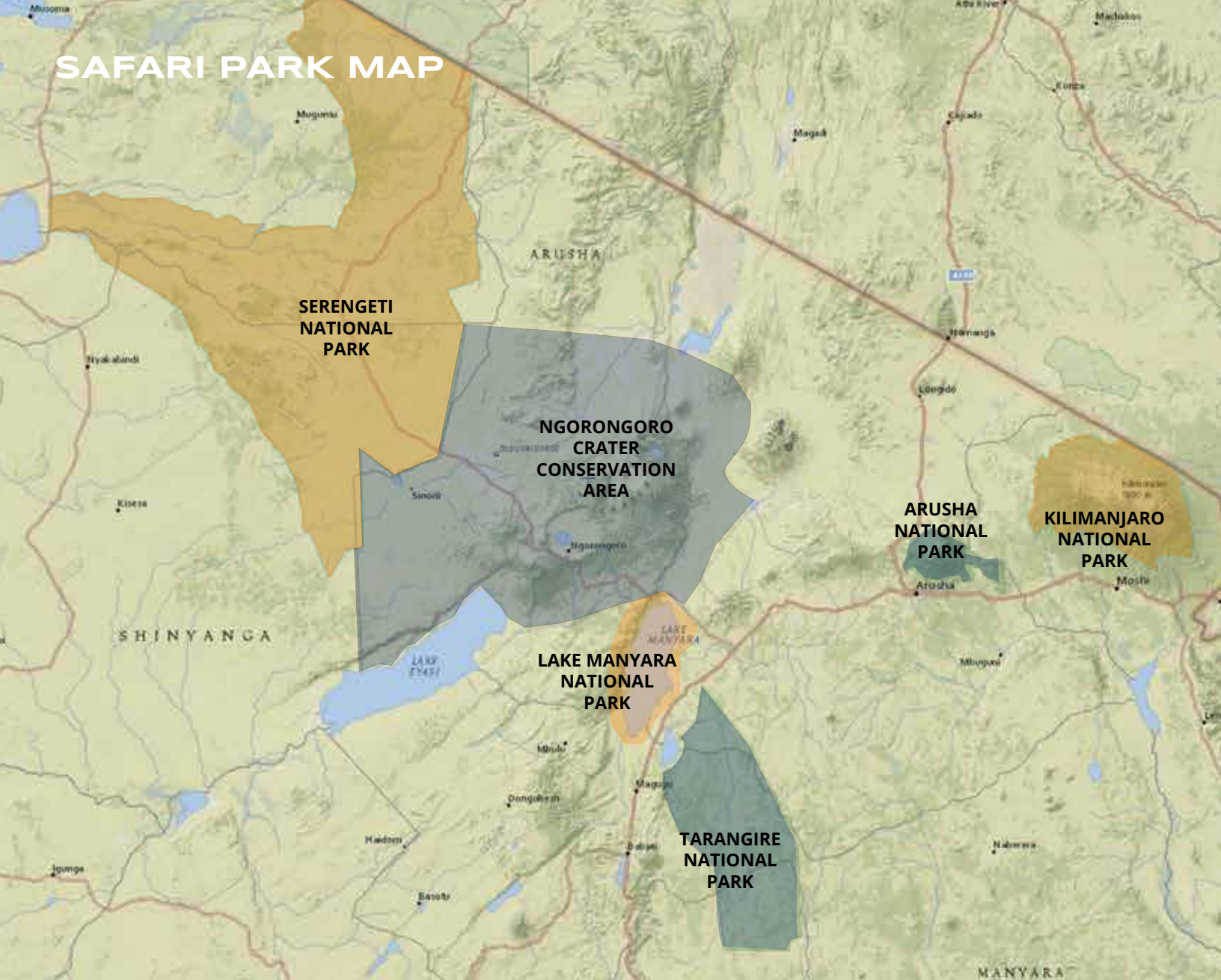
Our safari itineraries range from one to five days and visit Tanzania's best wildlife parks. An expert guide/driver will lead your safari.

Our guides have years of experience guiding safaris. They have an understanding of wildlife and animal behaviors. They know exactly where to look for animals and how to spot them.

Contact us to start planning your trip of a lifetime.



SAFARI PARK MAP



The safari itineraries created by Kilimanjaro Sunrise are designed to visit the top safari parks in Tanzania. The parks each have their own unique features—each is excellent in its own way.

ARUSHA NATIONAL PARK

Tanzania's Arusha National Park is on the bottom slopes of Mount Meru, Africa's fifth highest mountain. The park has a large number of animals in a relatively small area.

LAKE MANYARA NATIONAL PARK

Located at the end of the Great Rift Valley, the park surrounds the lake. The shores of the lake are crowded with wildlife from flamingos and other aquatic birds to giraffes, water buffalo, and wildebeest.

TARANGIRE NATIONAL PARK

Several species of wildlife can be found on the banks of the Tarangire River that runs throughout the park. However, it is known for its large herds of elephant that migrate there for water.

NGORONGORO CRATER CONSERVATION AREA

The Ngorongoro Crater is a smaller version of the Serengeti. They both have the same animals but the Crater also has the protected Black Rhino. Park Rangers diligently watch for poachers from the Crater rim.

SERENGETI NATIONAL PARK

Finally, don't go to Africa without visiting the world-famous Serengeti National Park. The massive park has thousands of animals that, each year, make the Great Migration from the south across the Kenyan border to the north into Maasai Mara National Park.



SERENGETI NATIONAL PARK



Tanzania's oldest and most popular national park, the Serengeti, is also a UNESCO World Heritage Site and a 7th Natural Wonder of Africa. It is famed for its annual Great Migration. From the Southern Serengeti Plains of Tanzania to the Maasai Mara Reserve of Kenya, the migration averages six million wildebeest, more than 200,000 zebra, and 300,000 Thomson's gazelles. Even when the migration is not active the Serengeti still offers one of the best opportunities for game viewing in Africa.

The name "Serengeti" is a Maasai word which means "the place where the land runs on forever".

The Serengeti is home to a wide variety of wildlife such as buffalo, elephants, and giraffes. They are joined by thousands of eland, topi, kongonis, impalas, and Grant's gazelles.

Nearly 5,700 square miles make up the park. Its vast boundaries are filled with animals roaming freely. There are more than 30 species of large herbivores and 500 bird species in this area due to the unique combination

of habitats. Our driver will monitor the radio to take you to where the animals are active.

As a result of historic volcanic activity, the landscape has been sculpted by flora and fauna. The terrain varies from open plains in the south, savannas with scattered Acacia trees in the center, hilly, wooded grassland in the north, and extensive woodlands and black clay plains in the west. Throughout the region, there are small rivers and lakes. Most of the action takes place near these small bodies of water. You can watch lionesses train their cubs to hunt or stalk an unsuspecting impala. Perhaps you will see a crocodile snatch its prey from the banks of a waterhole. There is no better safari destination than the Serengeti. In order to experience everything this park has to offer, you must book at least a 4-day driving safari.



NGORONGORO CRATER



TARANGIRE



More than 30,000 animals live in Ngorongoro, the largest unbroken caldera in the world. Ngorongoro Crater is known as the 'World's Largest Open Aired Zoo' due to its unique landscape shape where one can look down into a vast expanse of grassland while standing on the crater rim.

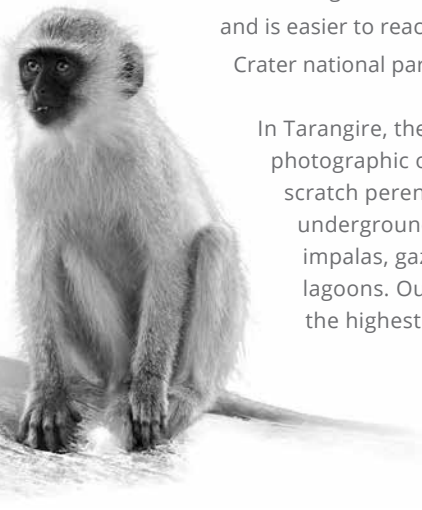
The natural amphitheater of Ngorongoro Crater is an 11-mile-long, 2,000 feet deep expanse surrounded by extinct volcanoes, making it an ideal habitat for animals to remain for their entire lives. With the enclosed bowl containing a lake, forest, and grasslands, there are numerous species that live here. This includes all of the Big Five, as well as hippopotamuses, crocodiles, antelopes, and an incredible variety of birds.

**“ IF THERE WERE
ONE MORE THING
I COULD DO, IT WOULD
BE TO GO ON SAFARI
ONCE AGAIN.”**

— Karen Blixen

Tarangire National Park, also known as the “Land of the Giants” because of its savannah elephants and Baobab trees, is an undiscovered gem of Tanzania. The Tarangire National Park is not as popular with tourists as other safari parks, but the game viewing here is just as spectacular. Located west of Arusha, Tarangire is a reserve named after the Tarangire River and is easier to reach than both Serengeti and Ngorongoro Crater national parks.

In Tarangire, the landscape provides breathtaking photographic opportunities. As many as 300 elephants scratch perennially dry river beds in search of underground streams, while zebras, buffaloes, impalas, gazelles, and eland crowd shrinking lagoons. Outside of the Serengeti ecosystem, it has the highest concentration of wildlife.



LAKE MANYARA



ARUSHA

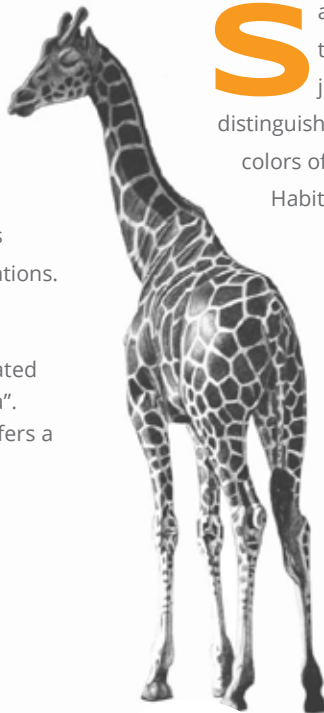


Lake Manyara National Park is two thirds actual lake. This aquatic haven is an expanse of Acacia woodland and groundwater forest and was formed by a gigantic fracture in the Earth's crust millions of years ago. The shallow alkaline waters of the lake support a plethora of wildlife species, and are most famed for its elephant, flamingo and elusive tree-climbing lion populations.

Lake Manyara is a scenic gem, with some of the most spectacular views in all of Africa. Ernest Hemingway stated that its landscape was "the loveliest I had seen in Africa". The compact game-viewing circuit through Manyara offers a virtual microcosm of the Tanzanian safari experience.

“THE EYE NEVER FORGETS WHAT THE HEART HAS SEEN.”

— African Proverb



Safari goers often overlook Arusha National Park, despite the fact that it offers the chance to explore diverse habitats just 40 minutes from Arusha town. Three distinct features distinguish the park: lush swamps of the Ngurdodo Crater, changing colors of Momella Lakes and rugged alpine peaks of Mount Meru. Habitat ranges from highland montane forest to lowland swamp.

There are 575 species of birds in Arusha National Park, including migrant and resident birds. In Tanzania's Northern Safari Park Circuit, it is also the only place where one can see the black and white colobus monkey. The park contains many species of antelope, a baboon, a giraffe, a buffalo, a hippopotamus, a hyena, a warthog, a zebra, and many other animals.



ACCOMMODATIONS



We have created your safari experience to be everything you thought a safari should be. This includes our exclusive use of tented camps—close to the parks—for maximum viewing time between sunrise and sunset.

TENTED CAMPS

A tented camp is a semi-permanent camp located right at the edge of a safari park. It is common to see animals wandering through the camp. Each tent has a permanent floor with canvas walls and a roof. It includes comfortable beds, a lounge area, and a separate bathroom.

THE VEHICLES

Our fleet of safari vehicles is meticulously maintained and modified at our mechanical facility. The stock Toyota Landcruiser has been lengthened for seating up to seven. They have been reinforced to withstand the rigors of the safari park rough roads. The suspension and roof pillars have also been upgraded. They come equipped with a fridge, wifi, and charging ports.

OUR GUIDE/DRIVER

Our safari drivers are also your guide. They have many years of experience driving through safari parks. They know where all the animals are located. Not only are they knowledgeable, but they also speak fluent English, are personable, and provide a delicious lunch along the way.



“ I NEVER KNEW OF A MORNING IN AFRICA WHEN I WOKE UP THAT I WAS NOT HAPPY.”

— Ernest Hemingway



THE ANIMALS



Lioness stalking her prey



African Buffalo



Cheetah



Black Rhino

You will have the chance to see many of the world's greatest animals up close and personal. If you want to capture the natural beauty of the area, be sure to bring a good camera with a minimum 300-400 mm lens. Here is the list of animals you may get a chance to view.

THE BIG FIVE

- **African Buffalo**
The Buffalo have few non-human predators aside from lions and large crocodiles.
- **Black Rhinoceros**
Black rhinos often fight each other and they have the highest rates of mortal combat recorded for any mammal.
- **Elephant**
Elephant, despite their large size, are able to hide in tall grass. They are also more likely to charge than the other Big Five.
- **Leopard**
Leopard are hard to spot, so look for their straight tails hanging from trees. They can be found hanging out in trees, making food of unsuspecting impalas
- **Lion**
The lion is an apex predator. Some scavenge—when the opportunity occurs, may hunt humans—however, the species typically doesn't.

ADDITIONAL ANIMALS

- **Baboons**
Noisy creatures that will snatch food right off your table.
- **Birds**
Flamingos, Ostrich, Kori Bustard, Goshawk, Vultures and African Pygmy Kingfisher are some of the most noteworthy.
- **Cheetah**
Elusive, fast and scattered due to the large packs of hyena.
- **Gazelles, Impalas, Dik Dik, and Waterbuck**
A moving buffet for the carnivores across the Serengeti plains.
- **Hippopotamus**
Highly aggressive and unpredictable animal that has been known to attack humans.
- **Hyenas and Serval**
Brave scavengers that will snatch vultures' prey right from their mouths.
- **Jackals**
Related to the coyote, they are proficient scavengers.
- **Monkeys**
Colobus, Blue, and Vervet scurry freely in the parks and lodges.
- **Reptiles**
Monitors and Crocodile inhabit the waterholes whereas the Agama Lizard hangs out more in the rocky dry areas.
 - **Warthogs**
Only pig species that has adapted to grazing the savannas of the parks.

